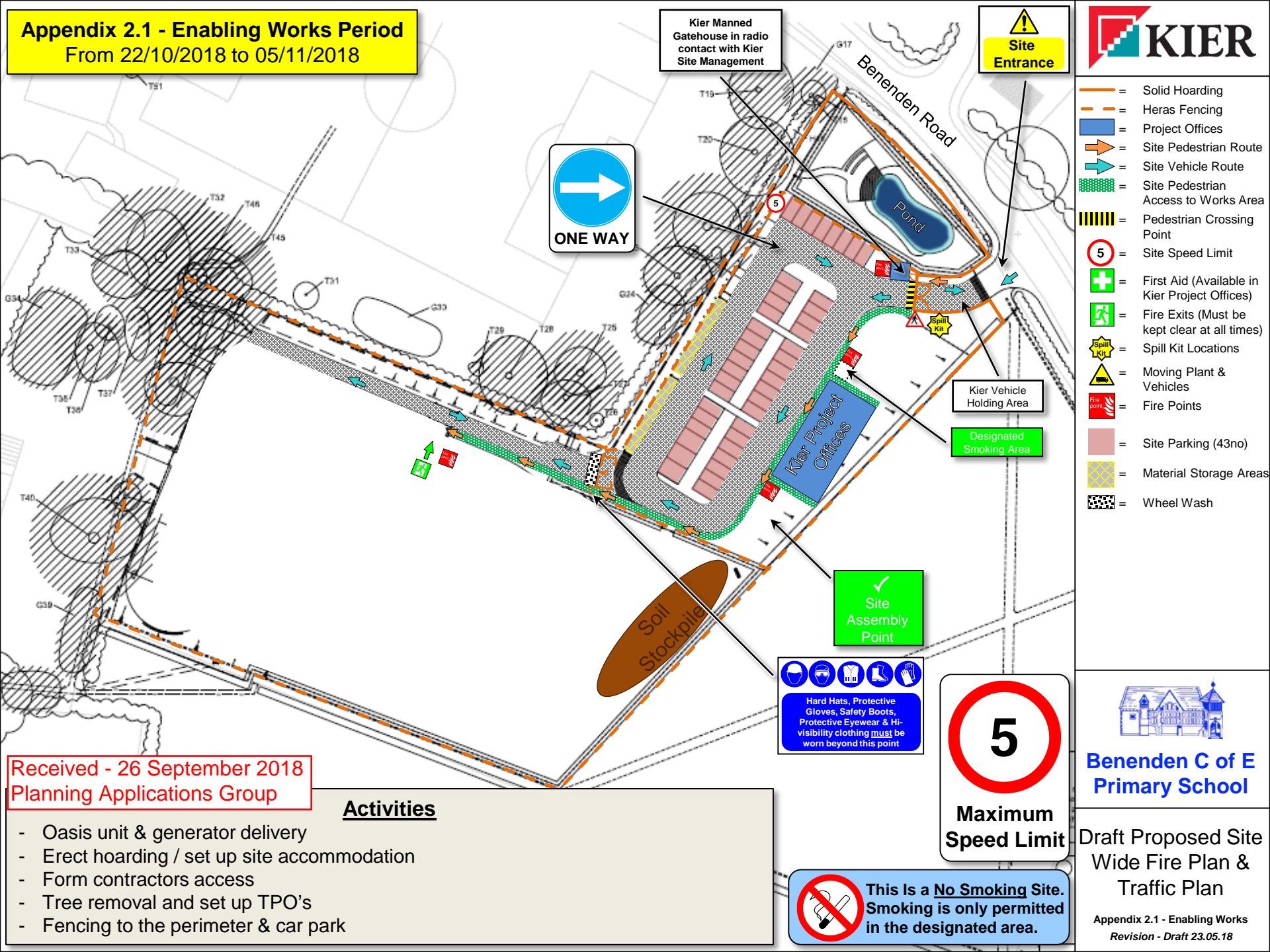


# Appendix 2.1 - Enabling Works Period

From 22/10/2018 to 05/11/2018



**Site Entrance**

Kier Manned Gatehouse in radio contact with Kier Site Management

**ONE WAY**

Kier Vehicle Holding Area

Designated Smoking Area

Hard Hats, Protective Gloves, Safety Boots, Protective Eyewear & Hi-visibility clothing **must** be worn beyond this point

**5**  
Maximum Speed Limit

This Is a **No Smoking Site**. Smoking is only permitted in the designated area.

Received - 26 September 2018  
Planning Applications Group

### Activities

- Oasis unit & generator delivery
- Erect hoarding / set up site accommodation
- Form contractors access
- Tree removal and set up TPO's
- Fencing to the perimeter & car park

**Benenden C of E Primary School**

Draft Proposed Site Wide Fire Plan & Traffic Plan